

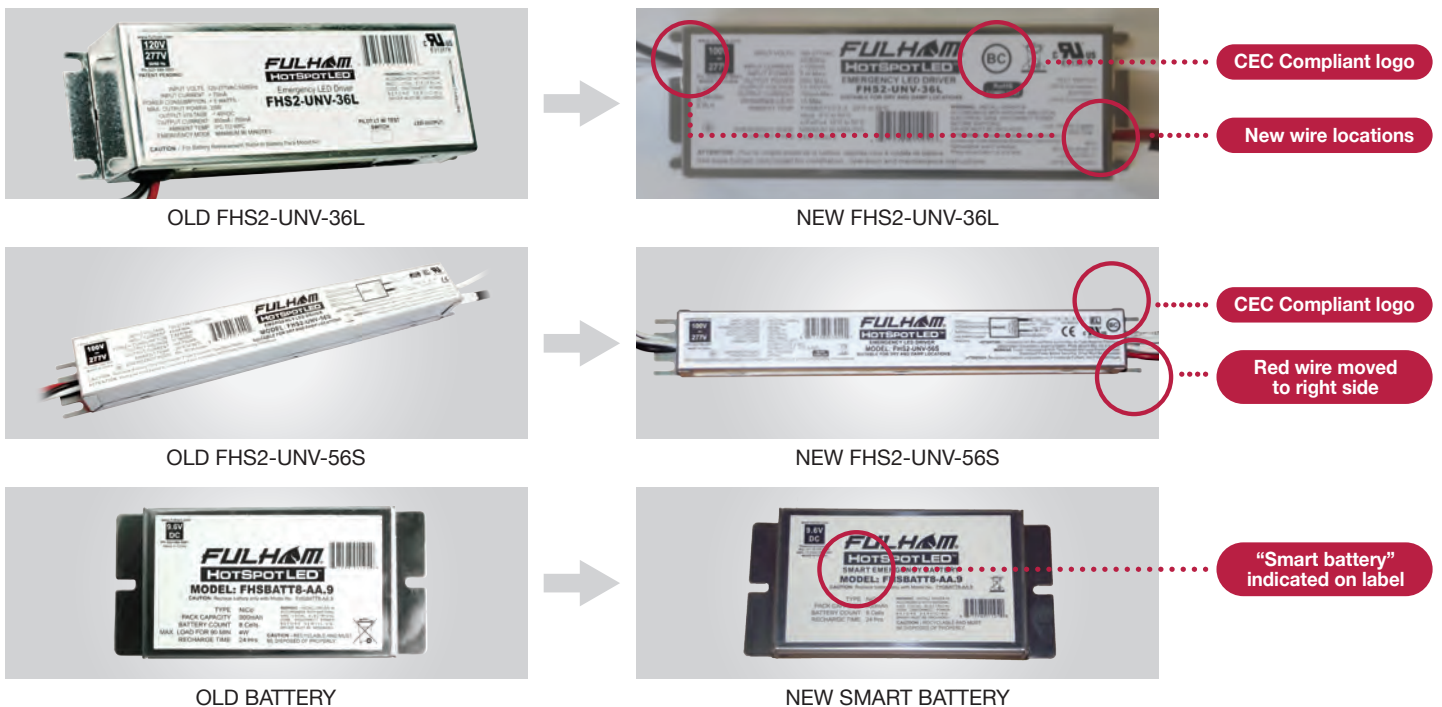
Important updates to HotSpot2 LED Emergency Systems



As a leader in new, innovative lighting technology, Fulham constantly strives to improve its products. That's why we've made some significant improvements to our HotSpot2 LED emergency drivers (models FHS2-UNV-36L and FHS2-UNV-56S) that we want to tell you about:

- HotSpot2 drivers are now CEC Compliant
- Output voltage range of FHS2-UNV-36L has been improved from 11-36VDC to 12-55VDC
- Self-diagnostic capability has been added (disabled by default)
- New emergency drivers now require updated HotSpot2 “smart batteries”
- Updated 3-wire battery extension cables (required when using battery extensions with new drivers)
- Connection ports on sides have been replaced with connectors on the ends for better access
- New green/red indicator light and test switch providing detailed system health status
- FHS2-UNV-56S current handling on LED driver load (white/black wire) improved from 1A to 2A
- All model numbers and dimensions remain the same

How to differentiate new HotSpot2 drivers and smart batteries from previous versions



Important: Emergency Driver and Battery Compatibility

The new CEC compliant drivers require updated “smart batteries” to function. They will not work properly with older HotSpot2 batteries. **New HotSpot2 drivers must be paired with new smart batteries. When using battery extension cables, new drivers must be paired with new 3-wire extension cables. Old HotSpot2 drivers can be used with either old or new smart batteries and extension cables.** For new orders Fulham will ensure you receive compatible drivers and batteries. If you have stock of the older HotSpot2 batteries, please note they will not function with new HotSpot2 drivers. Contact your Fulham rep or Fulham Client Services if you have questions.