

## Quick Guide for Programmable Driver Configuration

### Attention:

Please use the TPSB-100A cradle to configure compatible ThoroLED programmable drivers. TPSB-100A can't be used to configure ThoroLED NFC programmable drivers.

### Compatible LED Drivers

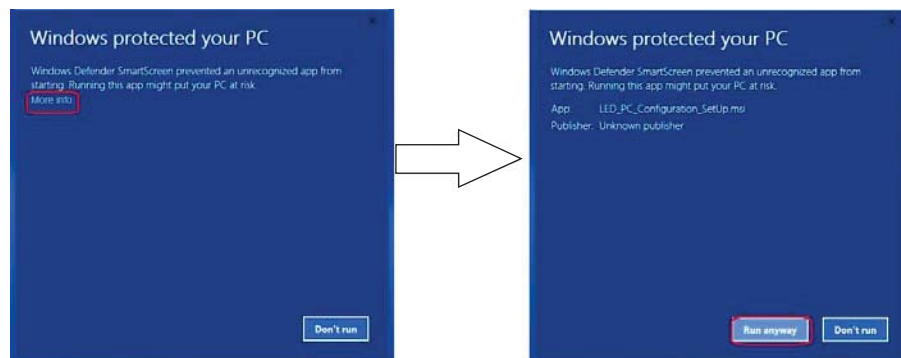
LED Driver Part#	LED Driver Description	Programming Tool
T1M1UNV260P-85L	85W, 860mA-2600mA	TPSB-100A
T1M1UNV105P-30L	30W, 350mA-1050mA	TPSB-100A
T1M1UNV140P-50L	50W, 470mA-1400mA	TPSB-100A

### Software installation

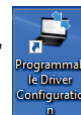
Required:

- Microsoft .NET Framework 4.0 runtime
- FTDI D2xx Driver - CDM v2.12.24 or above
- ProgramDriverConfig (LPL) v1.3.3 (20181224A).msi

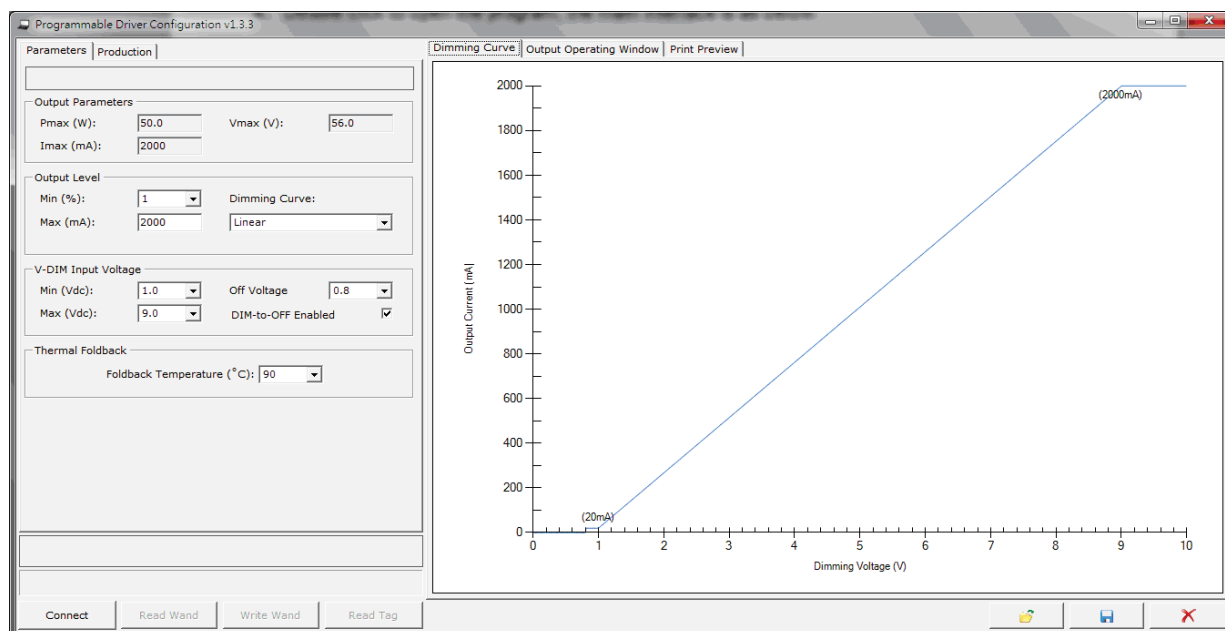
1. Locate the installer named "ProgramDriverConfig (LPL) v1.3.3 (20181224A)" and double-click to run. The default install directory is C:\Program Files(x86)\LPL\. The software installation may be interrupted by Windows Defender Smart Screen. If this happens, press the icon "More info" and then "Run anyway" to skip the checking.



2. After installation, the icon "Programmable Driver Configuration" will be automatically added to the desktop.



3. Double click to open the program, the main interface is as below:



## Connection

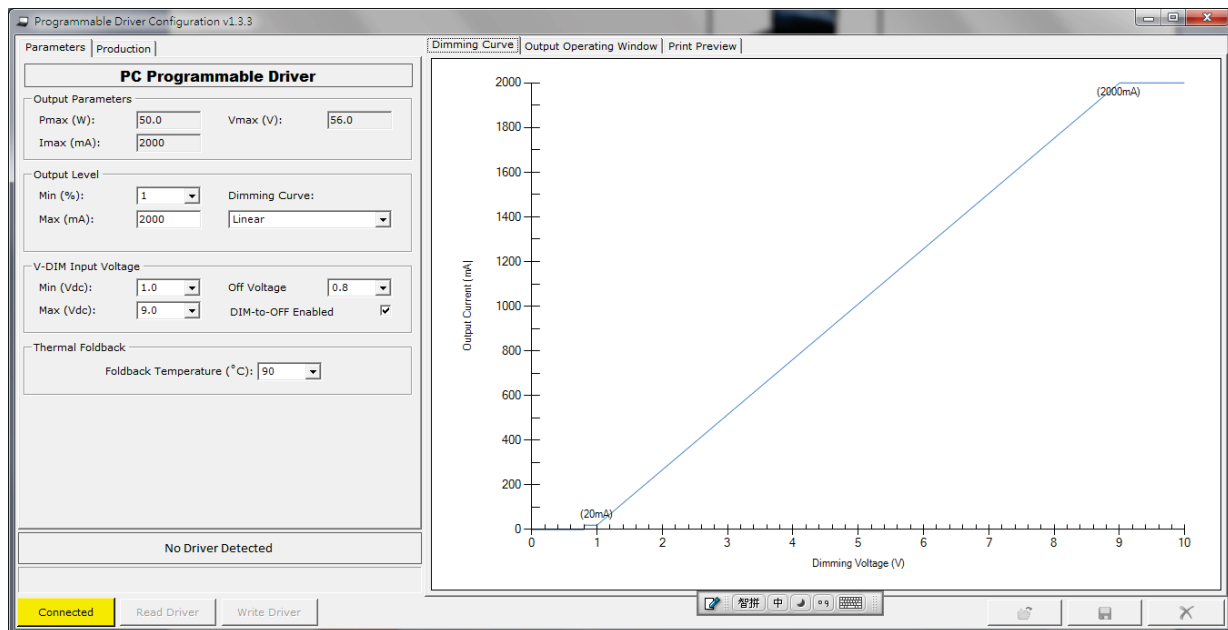
1. Connect the cradle to computer by "Micro-USB" cable. Place the driver on cradle, make sure driver's "BTN", Aux 120Vdc (+) and RTN terminals are connected to the pins of the cradle.

## Programming Connection Diagram



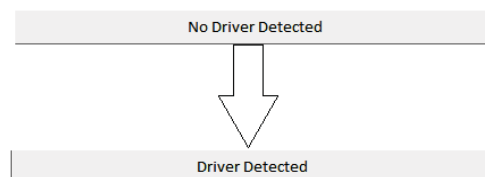
For some special PC programmable driver, additional adaptor on cradle is needed to fit for special connection style.

2. Press " Connect " button to start the program. If the program is successful connecting the cradle, the button will change to Connected . Otherwise, it will not change, please check for USB connection.

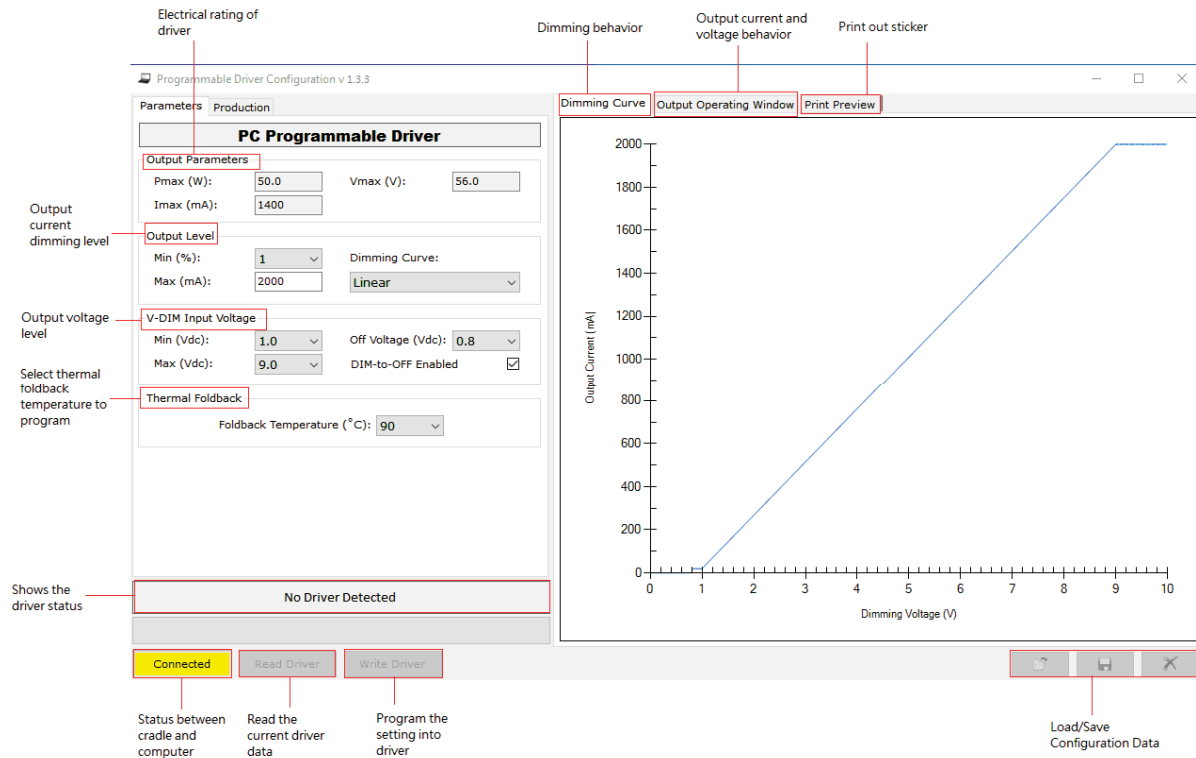


Cradle connection success

**Remarks:** User can disconnect the Cradle by press Connected again, the button will turn grey.



## Programmable Software Features

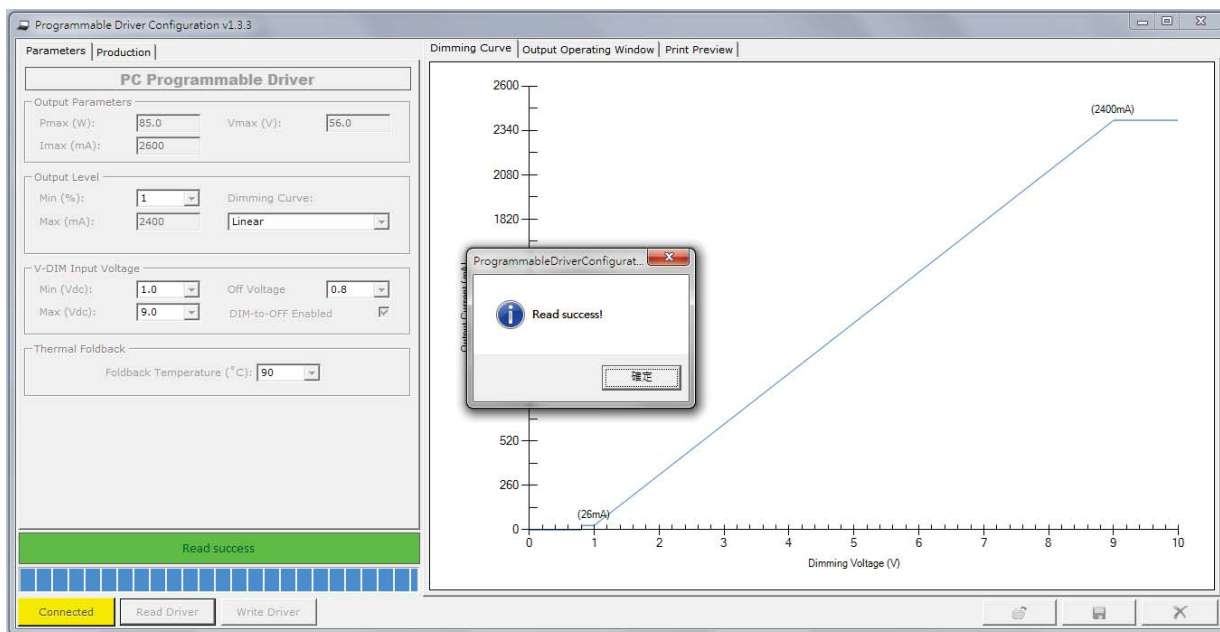


The following parameters can be configured by user:

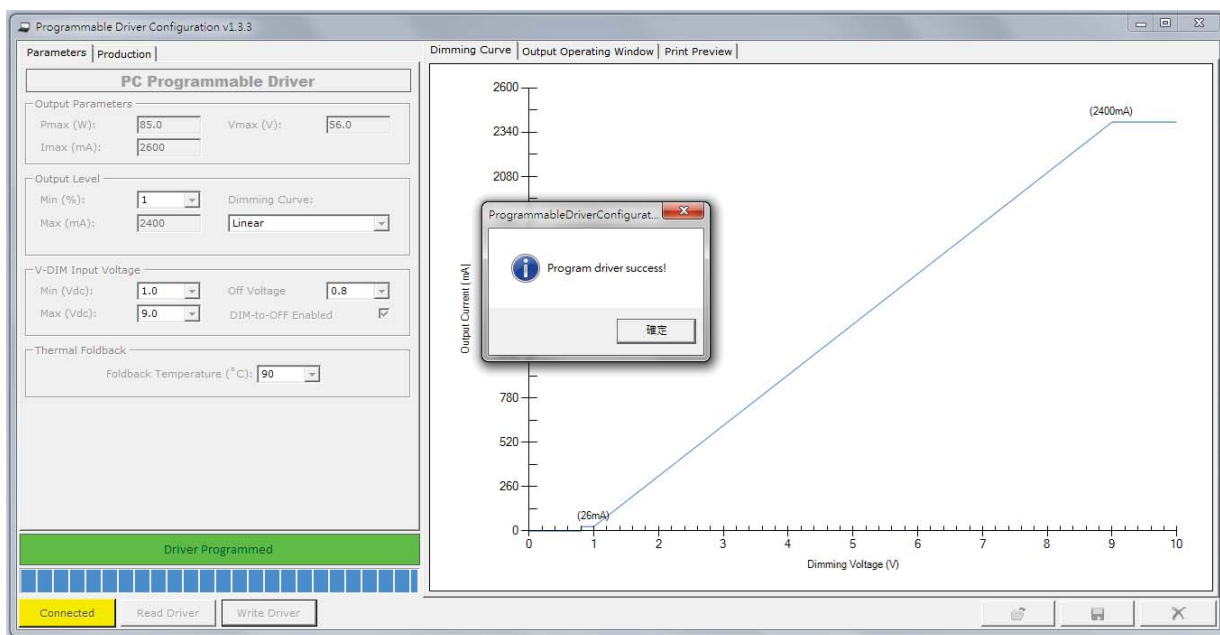
- Minimum output current percentage (1, 3, 5, 7, 10)
- Maximum output current
- Dimming Curve (Linear, Log, Inverse Log, Square-law)
- Minimum dimming voltage (1, 1.5, 2.0)
- Maximum dimming voltage (7.0, 8.0, 9.0)
- Off Voltage (0.8, 1.0, 1.2)
- DIM-to-OFF feature
- Thermal Foldback Temperature (75, 80, 85, 90) °C

## Read / Write the LED driver

During connecting the driver, press “Read Driver” to read out configuration of the driver, pop-up message displays if success:

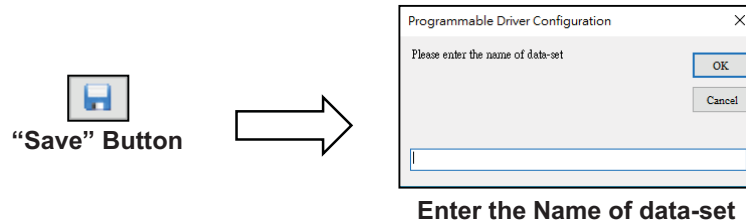


During connecting the driver, press “Write Driver” to configure the driver with displayed parameter, pop-up message displays if success:



## Load/Save Configuration Data

- i . To save the configuration data in the computer, press “Save” button and then enter the name of the data-set



- ii . To load the configuration data from the computer, press “Load” button and then select the name of the data-set



- iii . To remove the configuration data from the computer, press “Delete” button



## Production / Print Preview

User can configure the driver parameter and create the sticker with serial number for labeling and tracking. Further customization is available upon request.

