



## SPECIFICATION SHEET : PET-120-12-75W

This Is An Original Product From Fulham Co., Inc

**Description : PONY ET Series, High Frequency Electronic, Short Circuit, Over Load &, Thermal Protection. Dimming Capability. Operates Mr16 & MR 11 Lamps.**

**This Ballast Will Operate Following Lamps.**



**MR11**

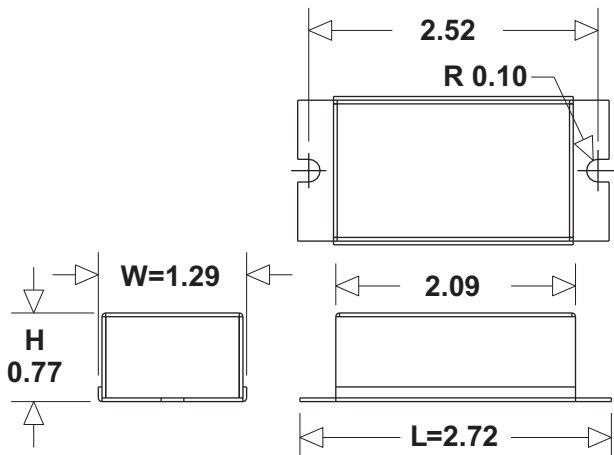


**MR16**

### ELECTRICAL DATA

<b>INPUT VOLT: 120V ± 10%, 50/60Hz</b>								
<b>LAMP WATTS/TYPE</b>	<b>20MR11</b>	<b>20MR16</b>	<b>35MR16</b>	<b>50MR16</b>	<b>65MR16</b>	<b>20+20MR11OR16</b>	<b>20+35MR16</b>	<b>35+35MR11OR16</b>
<b>LAMPS OPERATED</b>	<b>1</b>	<b>1</b>	<b>1</b>	<b>1</b>	<b>1</b>	<b>1</b>	<b>1</b>	<b>1</b>
<b>MAX LOAD</b>	<b>75W MAX.</b>							
<b>INPUT CURRENT:</b>	<b>0.60 AMP MAX.</b>							
<b>POWER FACTOR</b>	<b>0.950</b>							
<b>MIN LOAD W/O DIMMER</b>	<b>10W</b>							
<b>MIN LOAD WITH DIMMER</b>	<b>20W</b>							
<b>CURRENT THD</b>	<b>20%</b>							
<b>VOLTAGE THD</b>	<b>5%</b>							
<b>EMI/RFI COMPLIANCE</b>	<b>FCC PART 18-A (Non-Consumer)</b>							
<b>SOUND RATING</b>	<b>" A "</b>							
<b>DIMMER CAPABILITY</b>	<b>YES</b>							
<b>VOLTAGE TRANSIENTS</b>	<b>ANSI 62.41</b>							
<b>PROTECTION</b>	<b>AUTO RESET</b>							
<b>MIN. OPERATING TEMP</b>	<b>25 °C ( 77 ° F )</b>							
<b>MAX. CASE TEMP</b>	<b>90° C ( 194 ° F )</b>							
<b>APPROVALS/CLASS</b>	<b>UR /cUR RECOGNIZED COMPONENT</b>							

### MECHANICAL DATA



Where : L = Length, W = Width, H = Height

### WIRING DIAGRAMS

WIRE	BLACK	WHITE	RED	BLUE	YELLOW	BROWN
LENGTH - INCHES	6 ± 1"	6 ± 1"		6 ± 1"		

