

FULHAM Specification Sheet : HH-HPS-MLT5-1000

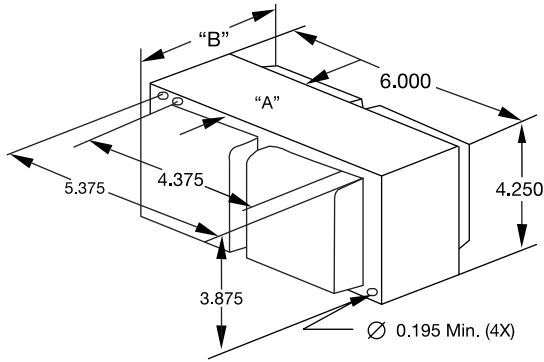
HIGHHORSE™ cRU[®] US

1000W S52
Core & Coil 5 Tap
High-Pressure Sodium Ballast

60 Hz HPS CWA
Status: Active

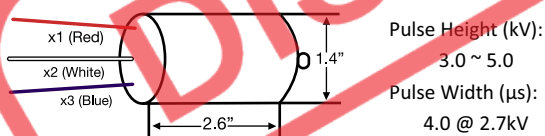
Mechanical Data:

4.25" X 6.0" Core

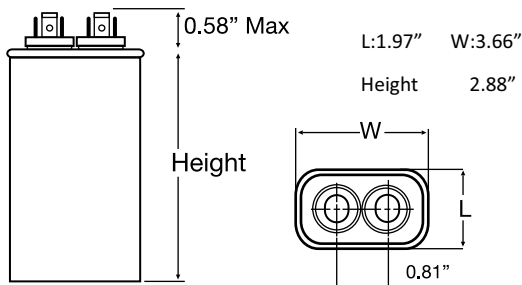


DIMENSION A	4.1 IN
DIMENSION B	6.1 IN
TOTAL WEIGHT	26.0 LBS
LEAD LENGTHS	12 IN

Ignitor: HHHPSIG51000



Capacitor: HHHPSWCAP51000 (Oil Oval Type)

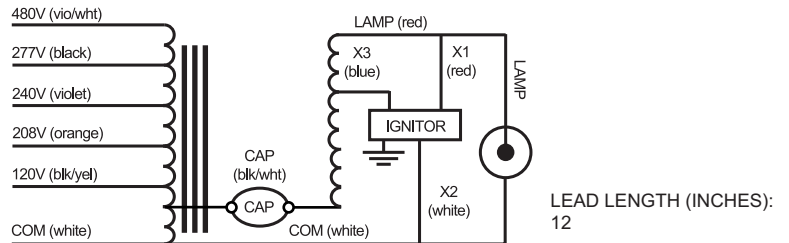


26µF 525V

Electrical Data:

INPUT VOLTS	120	208	240	277	480
MIN. STARTING TEMP	-40°F/-40°C				
POWER FACTOR (>%)	90%				
ANSI CODE	1000W, S-52				
CIRCUIT TYPE	CWA				
WATTS INPUT	1070				
NOM OPEN CIRCUIT VOLTAGE (V)	430				
RECOMMENDED FUSE (AMPS)	25	15	12	10	6
REGULATION	±10%				
LINE VOLTS	±10%				
LAMP WATTS	±10%				
INPUT VOLTAGE AT LAMP DROPOUT	70	125	135	150	250
LINE CURRENT (AMPS)					
OPERATING	9.7	5.6	4.9	4.2	2.4
OPEN CIRCUIT	7.1	4.1	3.6	3.1	1.8
STARTING	6.3	3.4	3.1	2.7	1.5
UL TEMPERATURE RATINGS					
180° CLASS H	E	D	D	D	C
200° CLASS N	A	A	A	A	A
COIL TEMPERATURE CODE	1029				
CAPACITOR REQUIREMENT					
MFD	26				
MIN VOLT	525				
IGNITOR					
PART NUMBER	HHHPSIG51000				
MAX DIST TO LAMP	10 FT FROM IGNITOR				
HIGH POTENTIAL TEST (V)	1 MIN: 2000, 1 SEC: 2400				
OPEN CIRCUIT VOLTAGE TEST (VOLTS)	400 - 480				
SHORT CIRCUIT CURRENT TEST (AMPS)					
SECONDARY	MIN	4.7			
	MAX	8.0			
INPUT	MIN	2.7	1.6	1.4	1.2
	MAX	8.2	4.8	4.1	3.5
COIL MATERIAL					
Cu/Al					

Wiring Diagram



Options:

Basic Ballast Kit includes Ballast, Ignitor, Wet Capacitor, and Mounting Hardware only.
HID Ballast and Lamp Kits also available; please see website www.fulham.com