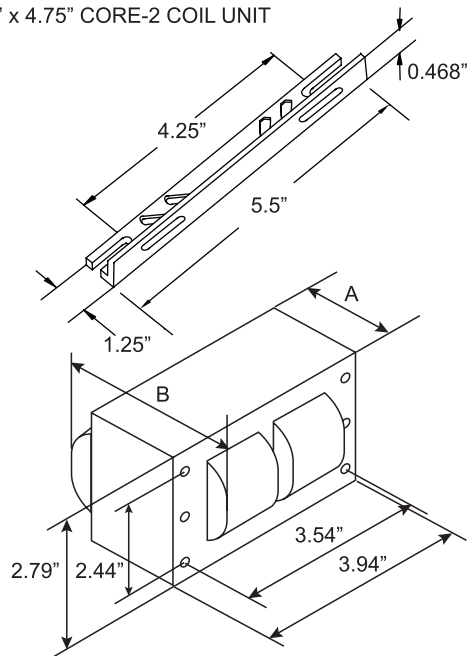


Mechanical Data:

4.25" x 4.75" CORE-2 COIL UNIT



DIMENSION A

DIMENSION B

TOTAL WEIGHT

LEAD LENGTHS

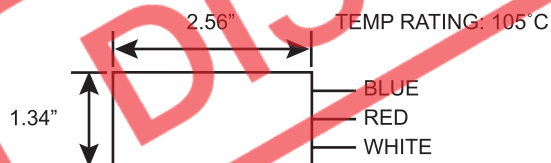
1.85 IN
3.10 IN
4.85 LBS
12"

HARDWARE KIT: HH-MH-HDW2

2 2" Thru-Bolts 4 Flat Washers
2 Lock Washers 2 Nuts

CLAMP: HH-MH-IGCLMP

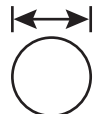
Ignitor:



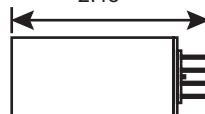
Capacitor:

Wet Capacitor: HHHPS-WCAP-70

1.2"



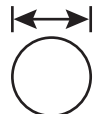
2.48"



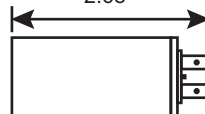
- Operating Temperature to 100° C
- UL-810 Fault Current Protection
- RoHS Compliant
- USA Manufactured to EIA-456-A

Dry Capacitor: HHHPS-DCAP-70

1.2"



2.68"



- Operating Temperature to 105° C
- RoHS Compliant
- USA Manufactured to EIA-456-A

Electrical Data:

INPUT VOLTS

MINIMUM STARTING TEMPERATURE

POWER FACTOR

ANSI CODE

CIRCUIT TYPE

WATTS INPUT

MAX INPUT CURRENT

NOM. OPEN CURRENT VOLTAGE

RECOMMENDED FUSE (Amps)

REGULATION

LINE VOLTS

LAMPS WATTS

LINE CURRENT (AMPS)

OPERATING

OPEN CIRCUIT

STARTING

UL TEMPERATURE RATINGS

INSULATION CLASS

COIL TEMPERATURE CODE

CAPACITOR REQUIREMENT

MFD

MIN VOLT

IGNITOR

PART NUMBER

MAX DIST TO LAMP

60Hz TEST PROCEDURES

HIGH POTENTIAL TEST (VOLTS)

OPEN CIRCUIT VOLTAGE TEST (VOLTS)

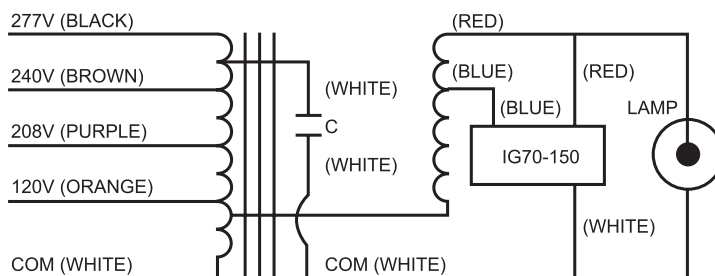
SHORT CIRCUIT CURRENT TEST (AMPS)

SECONDARY CURRENT

INPUT CURRENT

120	208	240	277
-40° C			
90%			
70 WATT LAMP, S-62			
HX-HPF			
91			
0.80	0.46	0.41	0.36
120			
2.5	2.5	2.5	2.5
±5%			
WITHIN TRAPEZOID			
H(180)			
1029			
7uF			
280			
HH-HPS-IG70-150			
2 FT			
1 MIN: 2000, 2 SEC: 2500			
110 - 130			
1.96 - 2.12			
1.94 - 2.23			

Wiring Diagram:



Options:

Basic Ballast Kit includes Ballast, Ignitor and Mounting Hardware only.
For capacitor option, add Base Model No. and one Capacitor code:

- = Dry Kit: Ballast + Ignitor + Dry Capacitor + Mounting Hardware
- ☐ = Wet Kit: Ballast + Ignitor + Wet Capacitor + Mounting Hardware

HID Ballast and Lamp Kits also available; please see website www.fulham.com.