



# FHCH10



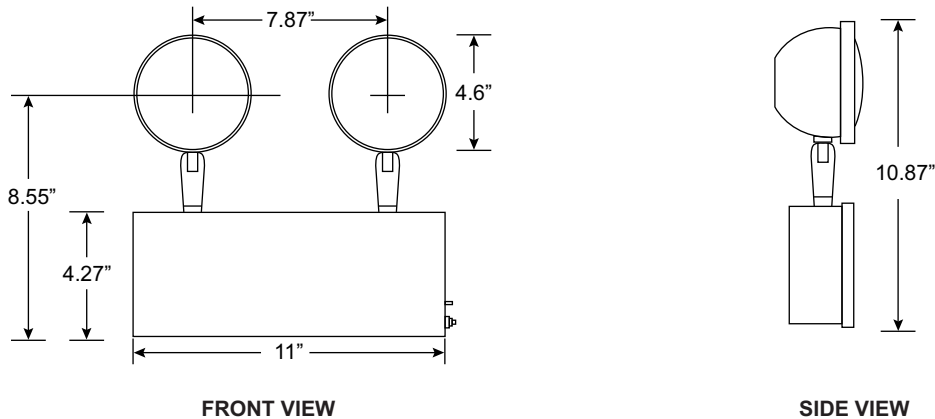
## Chicago Code Steel Emergency Lights

- Sealed push-to-test switch
- White corrosion-resistant polyester powder coat paint
- LED charge indicator
- Sealed AC ready light
- Maintenance free, 6V sealed lead-acid battery
- Dual voltage 120V/277V
- Two fully adjustable glare-free heads standard, metal heads tungsten halogen lamps
- Specification grade design
- Universal mounting pattern knockout in backplate for J-box mounting
- UL Listed in accordance with UL924

### General Specifications

Input Voltage	120/277VAC
Input Current (120V)	63mA
Input Current (277V)	31mA
Input Power (120V)	7.6W
Input Power (277V)	8.6W
Operating Frequency	60Hz
Overall Size	11" L x 10.87" H
Emergency Operation	120 minutes
Compliance	UL 924 Listed
	Damp Location
	City of Chicago approved
Warranty	5 years from the date of manufacture

### Mechanical Data



### Part Number Matrix

# FHCH10