



SPECIFICATION SHEET : WHSG5-220-T12-RS

This Is An Original Product From Fulham Electronic Co., Ltd

Description : WORKHORSE Specifier Grade Series Electronic Ballast, Drop In Replacement for Magnetic Ballast, Parallel Lamp Operation, THD Less Than 10%

This Ballast Will Operate Following Lamps.

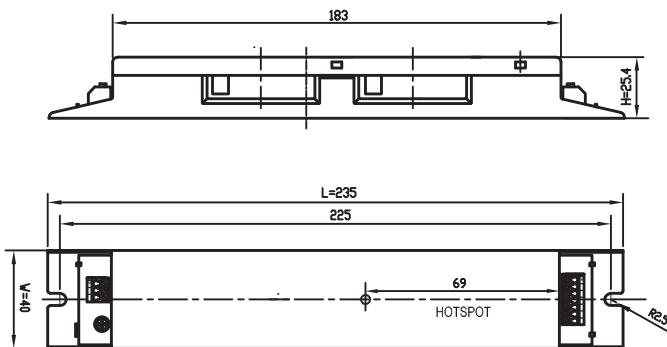


F36T8 / F40T12

ELECTRICAL DATA (With 220 Volt Application)

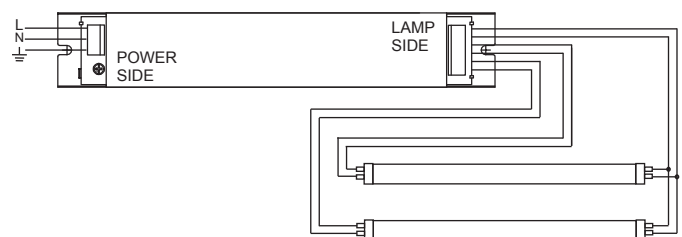
INPUT VOLT: 220V ± 10%, 50/60Hz		
LAMP WATTS/TYPE	F36 T8	F40 T12
LAMPS OPERATED	2	
INPUT WATTS	75W	
MAX. LINE CURRENT	0.35A	
POWER FACTOR	>0.95	
BALLAST FACTOR	1	
EFFICACY FACTOR	>88%	
THD	<10%	
CURRENT CREST FACTOR	< 1.7	
EMI/RFI COMPLIANCE	-	
SOUND RATING	" A "	
BALLAST TYPE	RAPID START	
VOLTAGE TRANSIENTS	ANSI 62.41	
INPUT/PROTECTION	FUSE	
OUTPUT/PROTECTION	EOL	
MIN. OPERATING TEMP	- 10 °C (14 ° F)	
MAX. CASE TEMP	75 °C (167 ° F)	
ENERGY STAR 4.0	-	
APPROVALS/CLASS	UL LISTED, CLASS " P ", 1 OUTDOOR	

MECHANICAL DATA



Where : L = Length, W = Width, H = Height

WIRING DIAGRAMS



NOTE : This Ballast Must Be Grounded

Fulham Electronic Co., Ltd extends limited warranty only to the original purchaser or to the first user for the period of 3 years from the date of manufacture when properly installed and under normal conditions of use.

DUE TO A PROGRAM OF CONTINUOUS IMPROVEMENT, FULHAM ELECTRONIC Co.,LTD RESERVES THE RIGHT TO MAKE ANY VARIATION IN DESIGN OR CONSTRUCTION TO THE EQUIPMENT DESCRIBED.

Address : 12705 South Van Ness Ave. Hawthorne CA 90250, U.S.A Tel.:323-599-5001 Website: www.fulham.com