

**Description:** 10.8W Linear LED Module / 560x24mm / 24LEDs / S12 P2

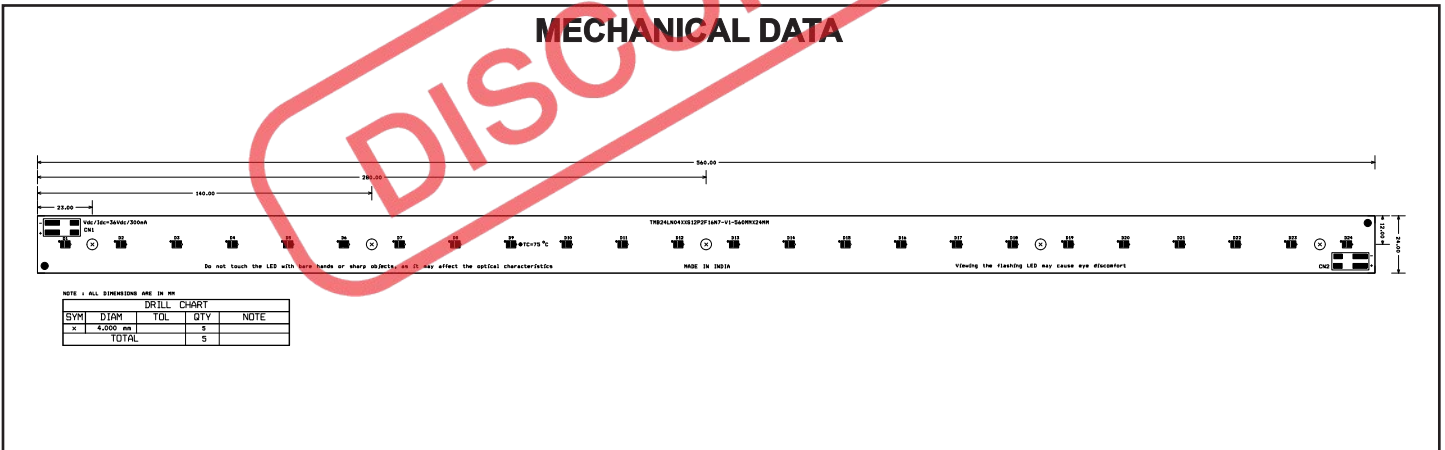
**This LED Module Should be Operated On:**

Any LED Driver designed to Provide output Current of 300mA and Voltage 36Vdc

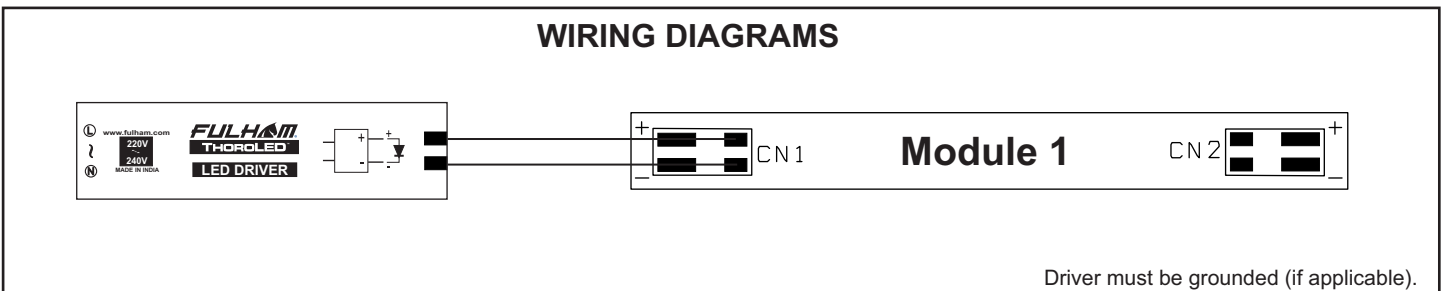
**ELECTRICAL DATA**

NOMINAL INPUT VOLTAGE (V <sub>DC</sub> )	36
NOMINAL INPUT CURRENT (mA)	300
NOMINAL POWER CONSUMPTION(W)	10.8
PCB SIZE (mm)	LINEAR 560 x 24MM
PCB MATERIAL TYPE	FR-4
CCT	5700K / 4000K / 2700K
CALCULATED USABLE ARRAY FLUX (lm)	1530 / 1500 / 1300
RECOMMENDED ATTACHMENT METHOD	M3 Pan Head Screw
WEIGHT (gm)	40
MAXIMUM STORAGE TEMPERATURE (°C)	-40 to 100
MAXIMUM OPERATING AMBIENT TEMPERATURE (°C)	- 35 to 50
MAXIMUM T <sub>c</sub> (°C)	75
BEAM ANGLE	115°
CRI (Typ)	70

**MECHANICAL DATA**



**WIRING DIAGRAMS**



Fulham extends a limited warranty only to the original purchaser or to the first user for a period of 3 years from the date of manufacture when properly installed and operated under normal conditions of use. For complete terms and conditions, please reference the Fulham product catalog ([www.fulham.com](http://www.fulham.com))

Due to a program of continuous improvement, Fulham reserves the right to make modifications or variations in design or construction to the equipment described. © Fulham Company Limited, All Rights Reserved.