

**Description:** 3 W Linear LED Module / 500X12mm / 10LEDs / S5 P2

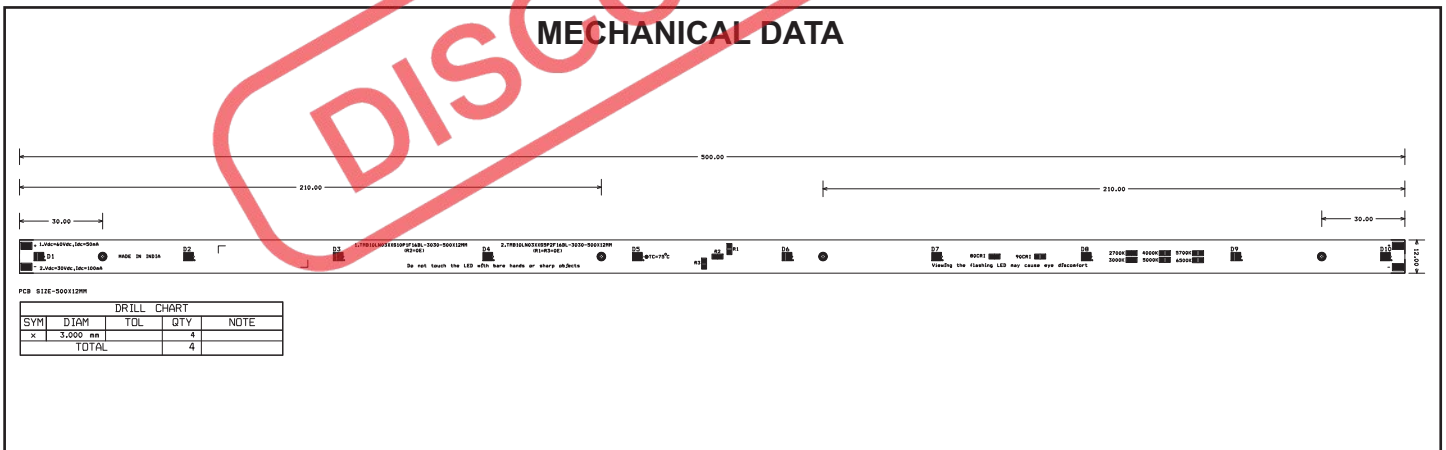
**This LED Module Should be Operated On:**

Any LED Driver designed to Provide output Current of 100mA and Voltage 30Vdc

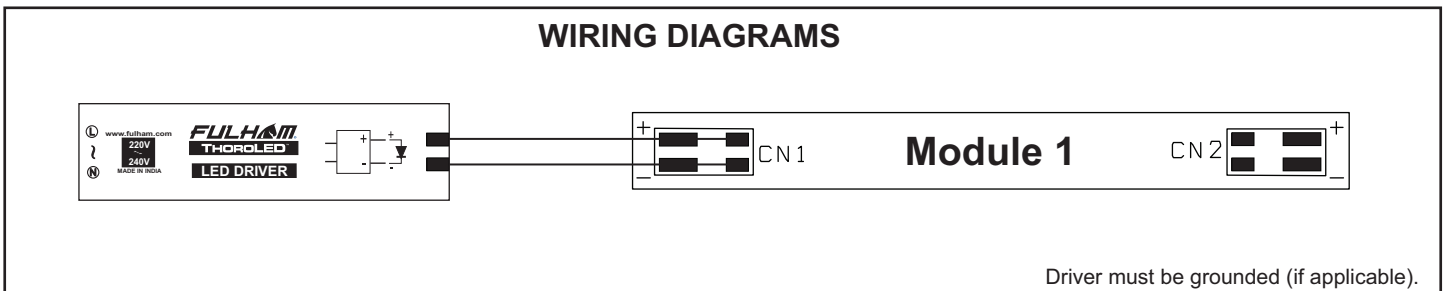
**ELECTRICAL DATA**

|  |                       |
|--|-----------------------|
| NOMINAL INPUT VOLTAGE (V <sub>DC</sub> )   | 30                    |
| NOMINAL INPUT CURRENT (mA)                 | 100                   |
| NOMINAL POWER CONSUMPTION(W)               | 3                     |
| PCB SIZE (mm)                              | LINEAR 500 x 12MM     |
| PCB MATERIAL TYPE                          | FR-4                  |
| CCT  | 6500K / 5700K / 4000K |
| CALCULATED USABLE ARRAY FLUX (lm)          | 500 / 500 / 500       |
| RECOMMENDED ATTACHMENT METHOD              | M3 Pan Head Screw     |
| WEIGHT (gm)                                | 45                    |
| MAXIMUM STORAGE TEMPERATURE (°C)           | -40 to 100            |
| MAXIMUM OPERATING AMBIENT TEMPERATURE (°C) | -40 to 50             |
| MAXIMUM T <sub>c</sub> (°C)                | 75                    |
| BEAM ANGLE                                 | 120°                  |
| CRI (Typ)                                  | 80                    |

**MECHANICAL DATA**



**WIRING DIAGRAMS**



Fulham extends a limited warranty only to the original purchaser or to the first user for a period of 3 years from the date of manufacture when properly installed and operated under normal conditions of use. For complete terms and conditions, please reference the Fulham product catalog ([www.fulham.com](http://www.fulham.com))  
**Due to a program of continuous improvement, Fulham reserves the right to make modifications or variations in design or construction to the equipment described. © Fulham Company Limited, All Rights Reserved.**