

**Description:** 3W Linear LED Module / 500x12mm / 10LEDs / S10 P1

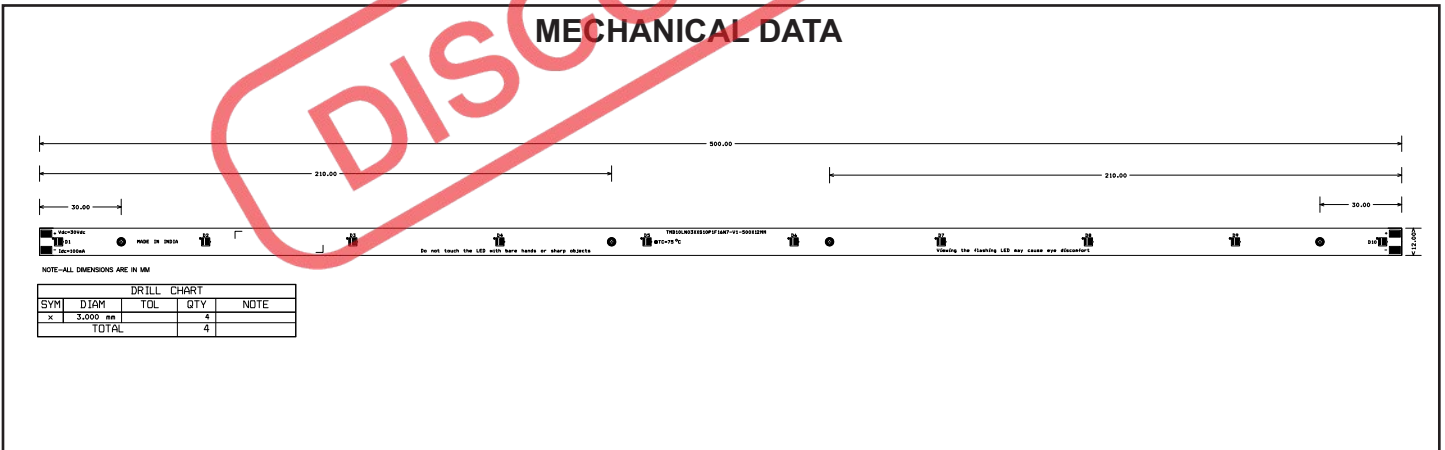
**This LED Module Should be Operated On:**

Any LED Driver designed to Provide output Current of 100mA and Voltage 30Vdc

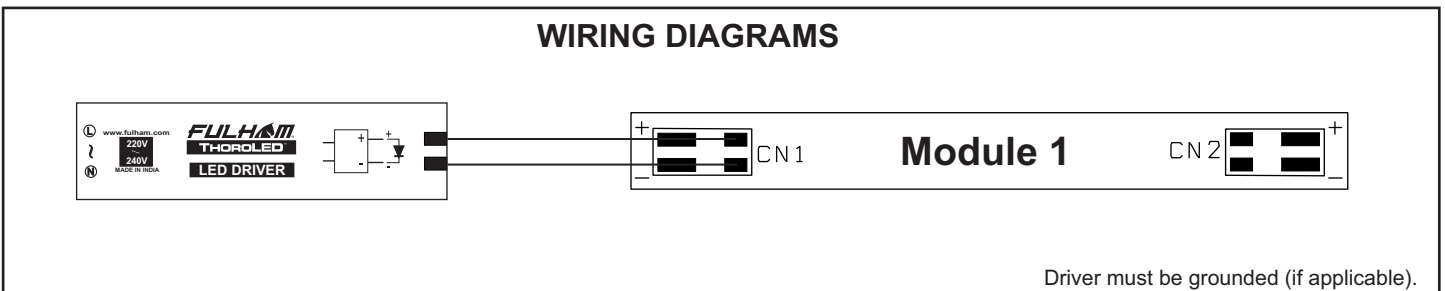
**ELECTRICAL DATA**

NOMINAL INPUT VOLTAGE (V <sub>DC</sub> )	30
NOMINAL INPUT CURRENT (mA)	100
NOMINAL POWER CONSUMPTION(W)	3
PCB SIZE (mm)	LINEAR 500 x 12MM
PCB MATERIAL TYPE	FR-4
CCT	6500K / 5700K / 5000K
CALCULATED USABLE ARRAY FLUX (lm)	440 / 430 / 370
RECOMMENDED ATTACHMENT METHOD	M3 Pan Head Screw with fiber washer
WEIGHT (gm)	16
MAXIMUM STORAGE TEMPERATURE (°C)	-40 to 100
MAXIMUM OPERATING AMBIENT TEMPERATURE (°C)	-35 to 50
MAXIMUM T <sub>c</sub> (°C)	75
BEAM ANGLE	115°
CRI (Typ)	70

**MECHANICAL DATA**



**WIRING DIAGRAMS**



Fulham extends a limited warranty only to the original purchaser or to the first user for a period of 3 years from the date of manufacture when properly installed and operated under normal conditions of use. For complete terms and conditions, please reference the Fulham product catalog ([www.fulham.com](http://www.fulham.com))  
**Due to a program of continuous improvement, Fulham reserves the right to make modifications or variations in design or construction to the equipment described. © Fulham Company Limited, All Rights Reserved.**