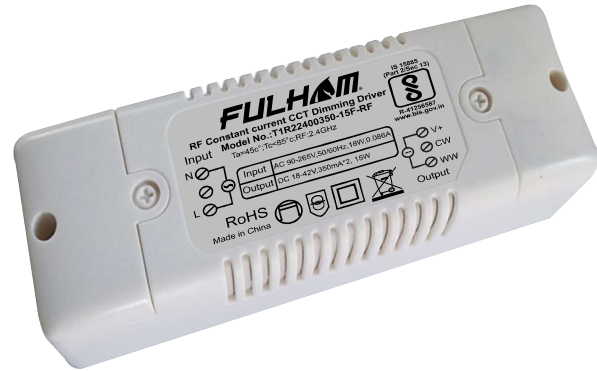




- 2 Channel RF 2.4GH Constant Current LED Driver
- Deep Dimming up to 3%
- Low O/P Current ripple
- Inbuilt Surge protection 2KV
- Dimming & TUNING Through Remote
- Output Rating: 24-42V; 350mA \pm 7%
- Output Wattage: 15W
- Efficiency >78%
- Dimensions: L115*W45*H31mm
- Application
 - Downlights, Architectural Lights



General Specifications

Rated Input Voltage	220-240Vac,50/60Hz
Operating Input Voltage Range	90-265Vac,50/60Hz
Input Current (Typ.)	0.086A (@240Vac)
Input Power	18W Typical
Power Factor	LPF
Efficiency	>78%
Driver Type	RF, Dimmable & Tunable Constant Current
Output Current	350mA \pm 7%
Output Voltage Range	18~42Vdc
Optimum Output Voltage Range	24~42Vdc
Output Power	15W
Number of Output Channels	2 Channel (Common Anode Configuration)
Dimming Controller Type/Dimming Range	RF 2.4GH, Dimming & Tuning
Output Type	Class II
Ambient Operating Temperature	-20°C to +45°C
Max. Case Temperature	85°C Max.
Input Surge Protection	Line-Neutral 2KV
Protections	Input Over Current : NON-Resettable
	Input Over Voltage : NA
	Input Under Voltage : NA
	Output Short Circuit : Auto Recovery (HICCUP MODE)
	Output Open Circuit : Auto Recovery (HICCUP MODE)
	Output Overload : YES
	Thermal Foldback : NA
Service Life	50,000 hours @ Tc Max
Approvals / Class	SELV Equivalent, Dry Locations
Warranty	3 Years
Weight	0.120Kg

Note : Suitable for Indoor application only
All electrical performance rated for Full load 240Vac at 25°C

Fulham extends a limited warranty only to the original purchaser or to the first user for a period of 3 years @ Tc Max from the date of manufacture when properly installed and operated under normal conditions of use. For complete terms and conditions, please reference the Fulham Product Catalog (www.fulham.com).
Due to a program of continuous improvement, Fulham reserves the right to make modifications or variations in design or construction to the equipment described.
© Fulham Company Limited, All Rights Reserved.

Wiring Data :






Wire Specification Recommended:

Input Wire: Three-core PVC plastic wire H05VV-F, diameter :0.72mm, VDE certificate, core 3*1.0mm². 300/500, Striping 11mm and tin dipping for the end of wire which is directly connect with the driver.

Output Wire: Three-core PVC plastic wire, diameter :0.5mm.

Striping 11mm and tin dipping for the end of wire which is directly connect with the driver.

Product compatibility (Remote control optional)

Item: HX-RFBT10-2.4G (4 zone)	Item: HX-RFBT12-2.4G (1 zone)	Item: HX-RFBT15 (1 zone)
		

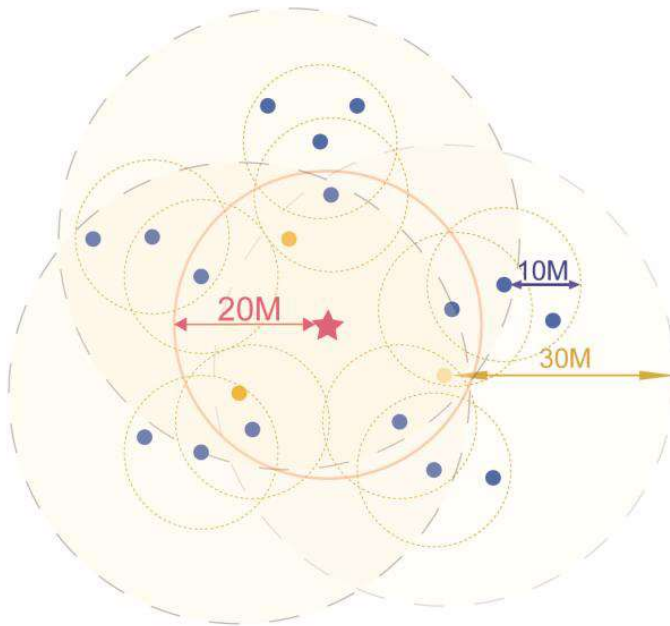
Typical Application

- 1) Compatible with a variety of models of remote control at the same time ,could be matched according to project situation



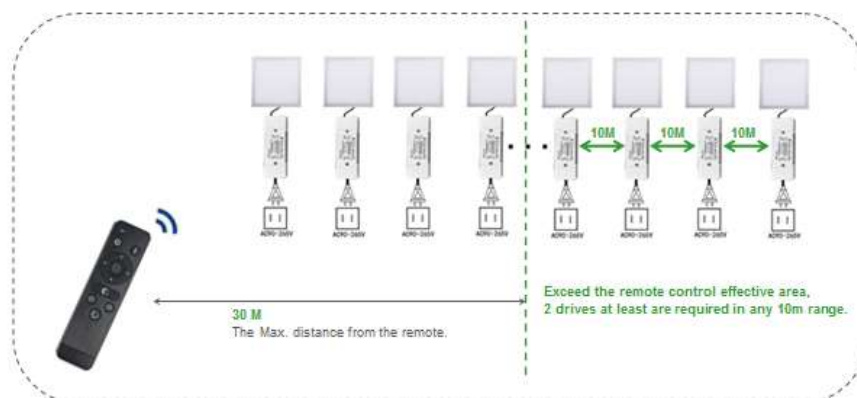
2) Wireless-synchronization function

Receivers which with wireless-synchronization functions will transmit the control signals from the remote control and self-inspection the work statuses for each other ,so multiple receivers in same zone will wireless-sync-work completely ,not only static mode but also dynamic mode, to achieve wired-like operation experience. the distance up to 20 meters between remote control to receiver ,and up to 10 meters between 2 receivers ,RF wireless signal repeater is suggested in over range distance or when the workable distance is shorter by the materials of space ,the effective range up to 30 meters.



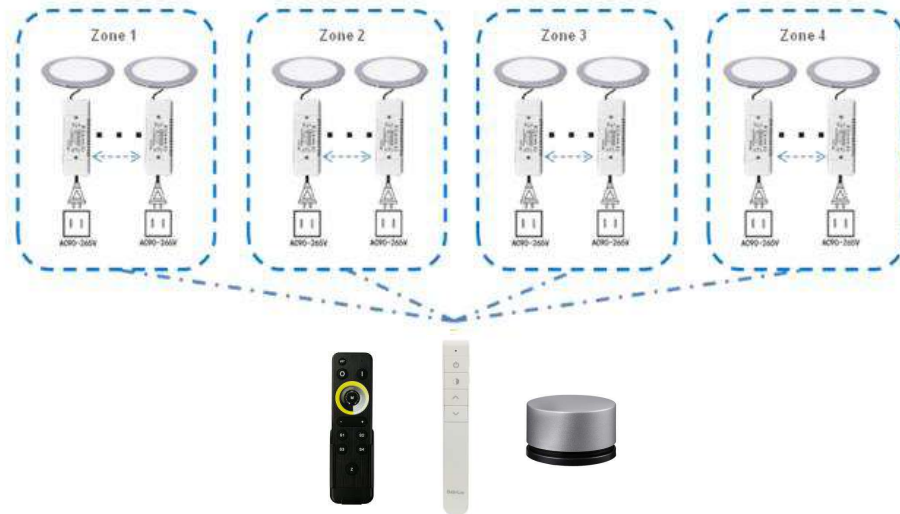
- Receiver(10meters)
- ★ Remote-control(20meters)
- Wireless-signal-repeater(30meters)

(3) 1 zone remote typical application, multi drivers could be wireless-sync controlled by the same one remote control.





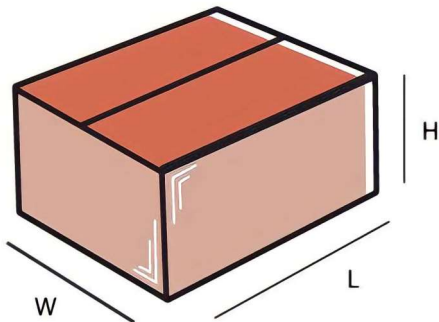
(4) 4 zones remote typical application, multi drivers could be controlled in each zone. 4 zone could be respectively and all over controlled



Tips:

- 1) If the lamp turned off by remote control, it also can restart the lamp directly by the AC power switch (No -flicker driver need to restart after turn off the power switch and discharge for 5s).
- 2) If the lamp is light up without any operation in 167 hours, the driver will turn off the lamp automatically. It will recount the time if there is any operation from power switch or remote control.
- 3) Memory function, each time power - on reserve the mode which stop in the last power-down.
- 4) For operations and precautions related to lighting system settings, please refer to the operating instructions of the relevant remote control.

Packaging



Master carton

OUTER DIMENSION		
L	W	H
235mm	220mm	105mm
Net Weight	Gross Weight	QUANTITY
3.6Kg	4.1Kg	30pc.

Installation Instructions:

Connect Wires as per details given on the Driver Screen. Keep proper ventilation around the LED Driver and do not stack any object on it. Also a 10-15 cm clearance must be kept when the adjacent device is a heat source. Do not exceed the declared Hot spot temperature (Tc max) under any circumstances.

Fulham extends a limited warranty only to the original purchaser or to the first user for a period of 3 years @ Tc Max from the date of manufacture when properly installed and operated under normal conditions of use. For complete terms and conditions, please reference the Fulham Product Catalog (www.fulham.com). Due to a program of continuous improvement, Fulham reserves the right to make modifications or variations in design or construction to the equipment described. © Fulham Company Limited, All Rights Reserved.