

- Dimmable Range 10-100%
- Multiple Current Selection by DIP Switch
- Constant Current LED Driver
- O/P Current - 650, 700, 750 OR 800mA
- Output Wattage: 40W
- Output voltage range of 30-50Vdc
- Suitable for Class II Fixtures
- Output Current Tolerance  $\pm 7\%$
- I/P Over Voltage Protection
- Surge Immunity 4KV
- Compact Linear Form Factor W30xH23

## General Specifications

Rated Input Voltage	240Vac $\pm 20\%$ , 50 Hz		
Operating Input Voltage Range	100-300Vac, 50 Hz		
Input Current	0.21 A Max @ 240Vac		
Input Power	48W Max (Typical @ 240Vac)		
Power Factor	$>0.95$ (@ 240Vac at Max Load)		
THD	$<10\%$ (@ 240Vac at Max Load)		
Efficiency	$>85\%$ (@ 240Vac at Max Load)		
Driver Type	Constant Current		
Output Current	800 $\pm 7\%$ , 750mA $\pm 7\%$ , 700mA $\pm 7\%$ , 650mA $\pm 7\%$ *Refer DIP switch Table for O/P current selection		
Output Voltage Range	30-50Vdc		
Output Power	40W		
Number of Output Channels	1 Channel		
Output Type	Class II		
Dimming Controller Type	Analog Dimming		
Dimming Range	(0-10Vdc) 10 - 100%**		
Ambient Operating Temperature Range	$-10^{\circ}\text{C}$ to $50^{\circ}\text{C}$		
Max. Case Temperature	$75^{\circ}\text{C}$		
Input Surge Protection	L-N - 4KV		
Protections	Input Over Current	: Non Resettable (Fuse)	
	Input Over Voltage	: CUTOFF @ $V_{in} > 325\text{Vac}$ ; AUTORECOVERY @ $V_{in} = 300-315\text{Vac}$ : Immunity - 320Vac for 48 hours & 440Vac for 8 hours	
	Input Under Voltage	: NA	
	Output Short Circuit	: Auto Recovery (HICCUP Mode)	
	Output Open Circuit	: Auto Recovery (HICCUP Mode)	
	Output to Ground short	: YES	
	Output Overload	: YES	
	Over Temperature	: NA	
Service Life	50,000 Hours @ Tc Max		
Approvals / Class	SELV Equivalent ; Dry and Damp Locations		
Warranty	03 Years		
Weight	0.160 Kg		

Note : Suitable for Indoor application only

\*\*Dimming Performance of the Driver should be taken after 30 min soaking at nominal input voltage.

### DIP Switch Chart :

I <sub>rated</sub> (mA)	DIP Switch		P <sub>rated</sub> (W)
	PIN 1	PIN 2	
800mA	ON	ON	40.0
750mA	ON	OFF	37.5
700mA	OFF	ON	35.0
650mA	OFF	OFF	32.5

Figure 1

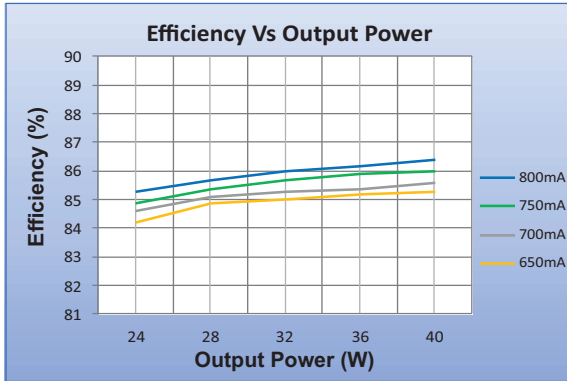


Figure 2

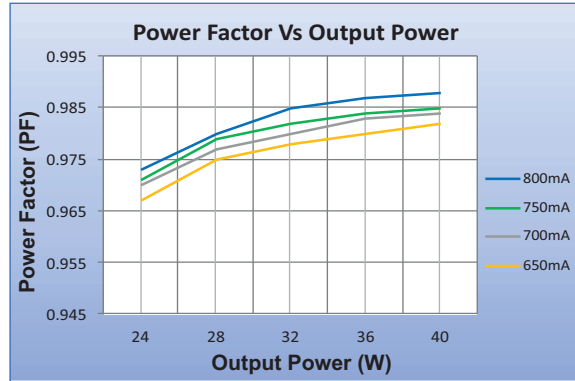


Figure 3

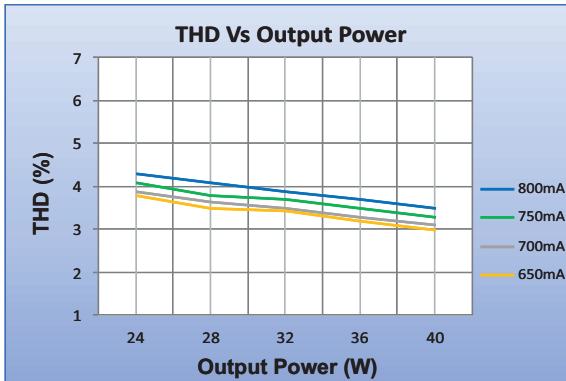


Figure 4

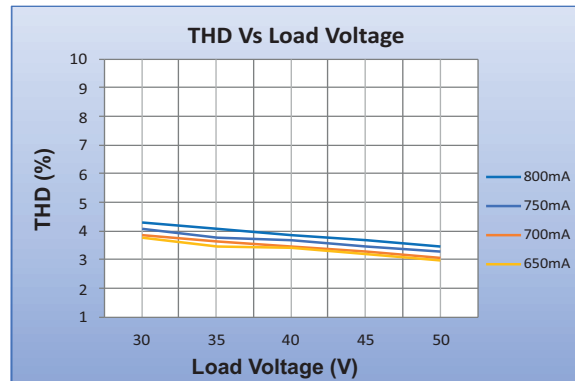


Figure 5

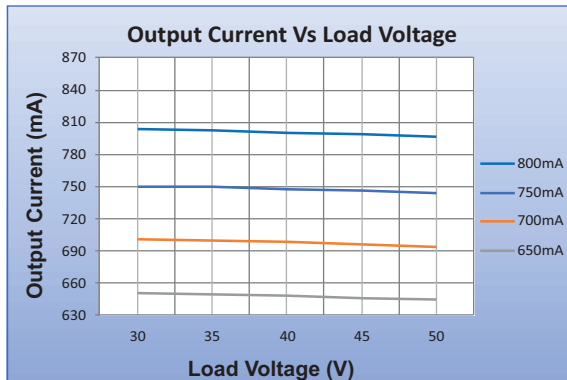
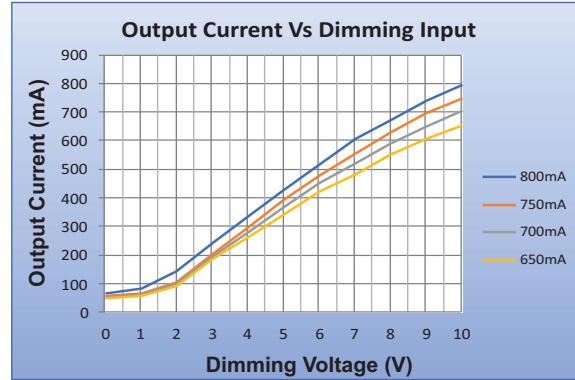
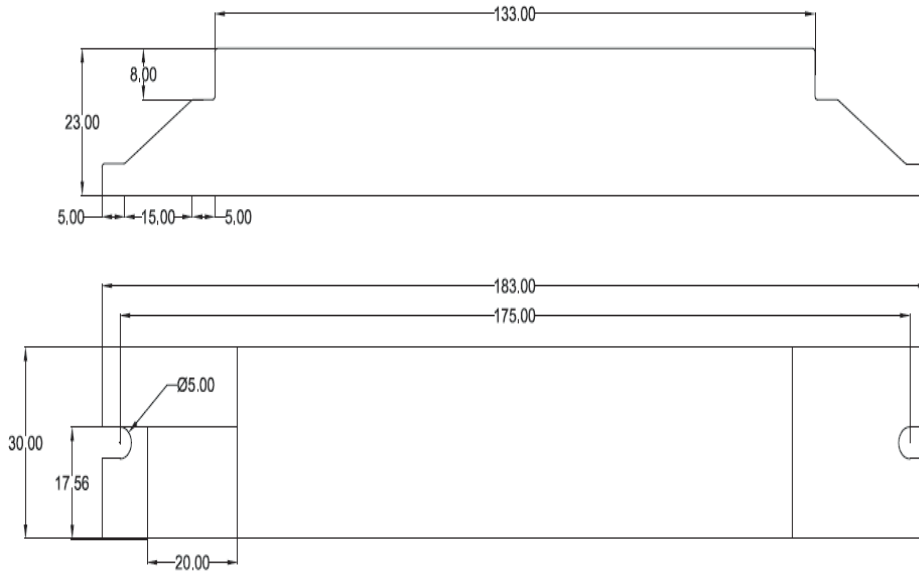


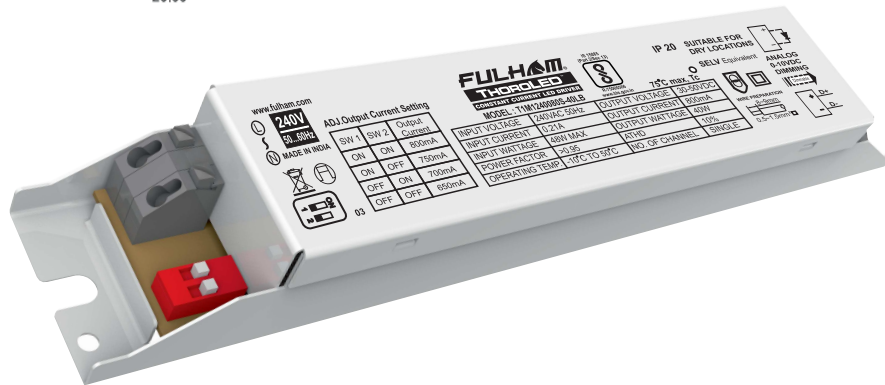
Figure 6



### Mechanical Data



### Product Image



Note : All Dimensions are in mm.

Tolerance=±0.5mm

### Wiring Diagrams



INPUT 2 PIN CONNECTOR	GREY	LINE
	GREY	NEUTRAL

OUTPUT 2 PIN CONNECTOR	ORANGE	POSITIVE
	GREY	NEGATIVE

DIMMING 2 PIN CONNECTOR	ORANGE	POSITIVE
	GREY	NEGATIVE

### Installation Instructions:

Connect Wires as per details given on the Driver Screen. Keep proper ventilation around the LED Driver and do not stack any object on it. Also a 10-15 cm clearance must be kept when the adjacent device is a heat source. Do not exceed the declared Hot spot temperature(Tc max) under any circumstances.

Fulham extends a limited warranty only to the original purchaser or to the first user for a period of **03 years @ Tc 75°C** from the date of manufacture when properly installed and operated under normal conditions of use. For complete terms and conditions, please reference the Fulham Product Catalog ([www.fulham.com](http://www.fulham.com)). Due to a program of continuous improvement, Fulham reserves the right to make modifications or variations in design or construction to the equipment described. © Fulham Company Limited, All Rights Reserved.