

Description: 17W Constant Current LED Driver, Single Channel, 21-42V, 0.40A (Non Dimmable)

This Driver Will Operate The Following LED Modules:

Any LED module designed to accept 400mA and a voltage of 21-42VDC.

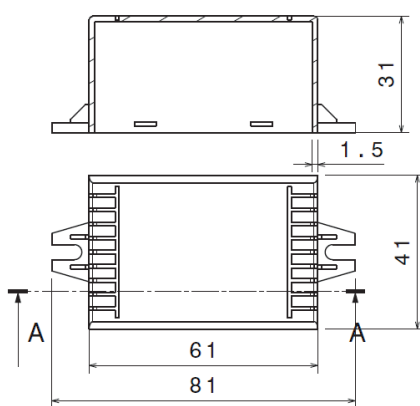
ELECTRICAL DATA

RATED INPUT VOLTAGE	240 Vac
OPERATING INPUT VOLTAGE RANGE	130Vac~277Vac, 50/60Hz
OPTIMUM PERFORMANCE INPUT VOLTAGE RANGE	216Vac~254Vac, 50/60Hz
INPUT CURRENT (MAX)	0.12A
POWER FACTOR	0.85
Athd	60%
EFFICIENCY	>82 %
INPUT POWER	21W
CONSTANT CURRENT, VOLTAGE OR POWER	Constant Current
OUTPUT CURRENT	400mA
OUTPUT VOLTAGE	21~42 Vdc
OUTPUT WATTAGE	17W
NUMBER OF OUTPUT CHANNELS	1
EMI	N.A.
DIMMING CONTROLLER TYPE	N.A.
DIMMING RANGE	N.A.
MAX. CASE HOT SPOT TEMPERATURE (Tc MAX.)	65°C
OPERATING TEMPERATURE	-10°C to 50°C
APPROVALS CLASS	SELV Equivalent

CIRCUIT PROTECTION

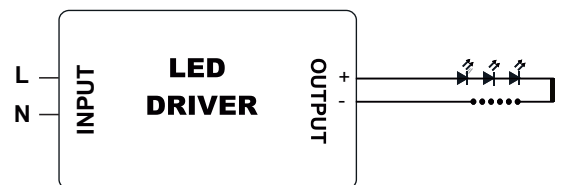
SURGE PROTECTION	: Line-Neutral 3kV
INPUT OVER CURRENT PROTECTION	: NON-RESETTABLE
INPUT OVER VOLTAGE	: APPLICATION @ 320VAC 48Hrs. & @ 360VAC 2Hrs.
INPUT UNDER VOLTAGE	: N.A.
OUTPUT SHORT CIRCUIT PROTECTION	: AUTORECOVERY (HICCUP MODE)
OUTPUT OPEN CIRCUIT PROTECTION	: AUTORECOVERY (HICCUP MODE)
OUTPUT TO GROUND SHORT PROTECTION	: YES
OUTPUT OVERLOAD PROTECTION	: YES
OVER TEMPERATURE PROTECTION	: N.A.

Note : All performance specified at Rated voltage and full load. Output current tolerance : +5%

MECHANICAL DATA

WIRING DIAGRAMS

INPUT SIDE	LENGTH	OUTPUT SIDE	LENGTH
BLACK	300 MM	BLUE	300 MM
WHITE	300 MM	RED	300 MM

Output wire with Terminal: N.A


Installation Instructions: Keep proper ventilation around the LED Driver and do not stack any object on it. Also a 10-15 cm clearance must be kept when the adjacent device is a heat source. Do not exceed the declared Hot spot temperature(Tc max) under any circumstances.

 Fulham extends a limited warranty only to the original purchaser or to the first user for a period of 3 years from the date of manufacture when properly installed and operated under normal conditions of use. For complete terms and conditions, please reference the Fulham product catalog (www.fulham.com)
Due to a program of continuous improvement, Fulham reserves the right to make modifications or variations in design or construction to the equipment described. © Fulham Company Limited, All Rights Reserved.