



TECHNICAL DATA SHEET : ELECTRONIC BALLAST

Project : STANDARD

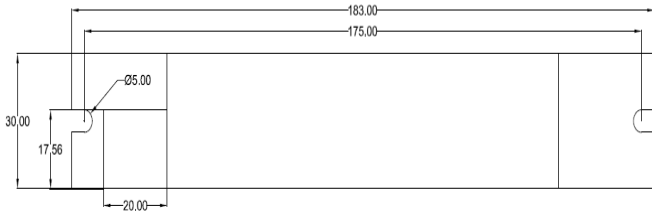
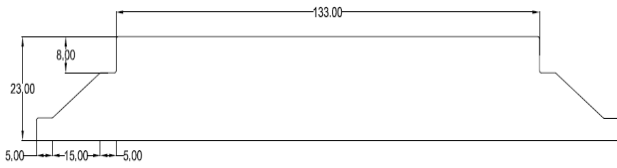
Type : COMMERCIAL

Model No : HPY-240-128-IT5-OAE

Remark :

Model : 1 X 28W BALLAST

Input Characteristics



1	Voltage (Un)	240 Vac
2	Operating Voltage Range	140 ~ 277 Vac
3	Frequency (Hz)	50 / 60 Hz
4	Current (A)	0.14 A
5	Wattage (W)	32W
6	Power Factor (PF)	> 0.96 (PPFC)
7	Current Harmonics (Athd)	< 30%
8	Over Current Protection	Yes
9	Surge Withstanding Capacity	Yes
10	Over Voltage Application	@ 320Vac 48Hrs & @ 360Vac 2 Hrs

Output Characteristics

Mechanical Details

1	Lamp Types	F28-T5
2	Number of Lamps	1
3	Lamp Connection	Single
4	Lamp Current	0.170A
5	Operating Frequency	≥ 40 KHz
6	Ignition Method	RS

1	Weight	100 gm
2	Case Dimensions	
	Length W/Mount	183 mm
	Center to Center (CTC)	175 mm
	Width	30 mm
	Height	23 mm
3	Case Material	Metal Cabinet
4	Wiring Diagram	On Screen
5	Input / Output Connections	Connectors Push Type
6	Wires Length & Colors	
	Input (White & Black)	N/A
	Output (White)	N/A
	Output (Gray)	N/A
7	Potting	N/A

Ballast Characteristics

1	Lamp Current Crest Factor (CCF)	≤ 1.8
2	Ballast Efficiency (BE)	≥ 86%

Protection Features

1	Deactivated Lamp	Yes
2	Restart or Latching	Latching

Environmental Operating Details

1	Minimum Lamp Starting Temperature	0°C
2	Max. Ambient Temperature	50°C
3	Max. Case Temperature (Tc)	70°C

Ordering Information

Sr	Model Number	Description	Case Lot
1	HPY-240-128-IT5-OAE	1x28W T5 <30% THD	20

Notes

A High power factor Electronic ballast specially designed for heavy duty use .

Key features :-

- Compact Design.
- High Voltage withstanding capacity.
- High Surge withstanding capacity
- Long Life.
- High Durability
- Lamp will not Shut down @ high Voltage
- Automatic restart after lamp replacement

Fulham extends a limited warranty only to the original purchaser or to the first user for a period of 1 years from the date of manufacture when properly installed and operated under normal conditions of use. For complete terms and conditions, please reference the Fulham product catalog (www.fulham.com)
Due to a program of continuous improvement, Fulham reserves the right to make modifications or variations in design or construction to the equipment described. © Fulham Company Limited, All Rights Reserved.

DOC NUMBER :-FULTDS060
REV :-1.2
Date :-28.08.2014