

4

3

2

1

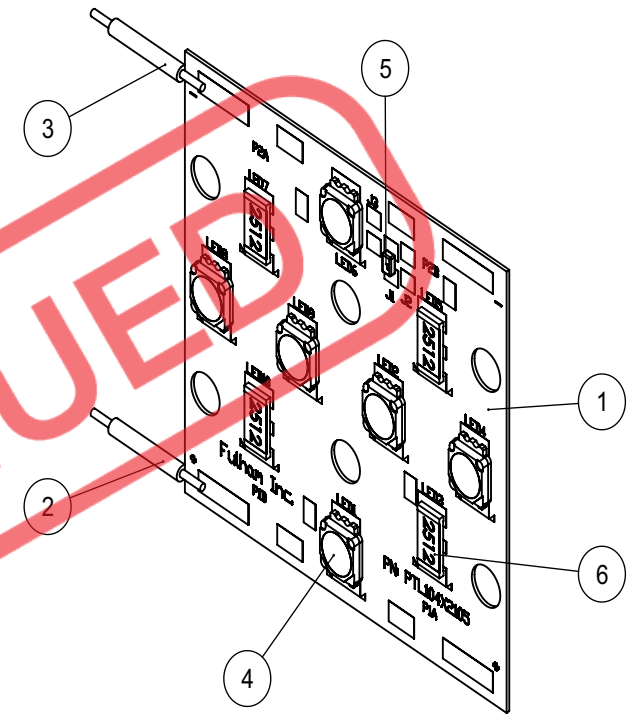
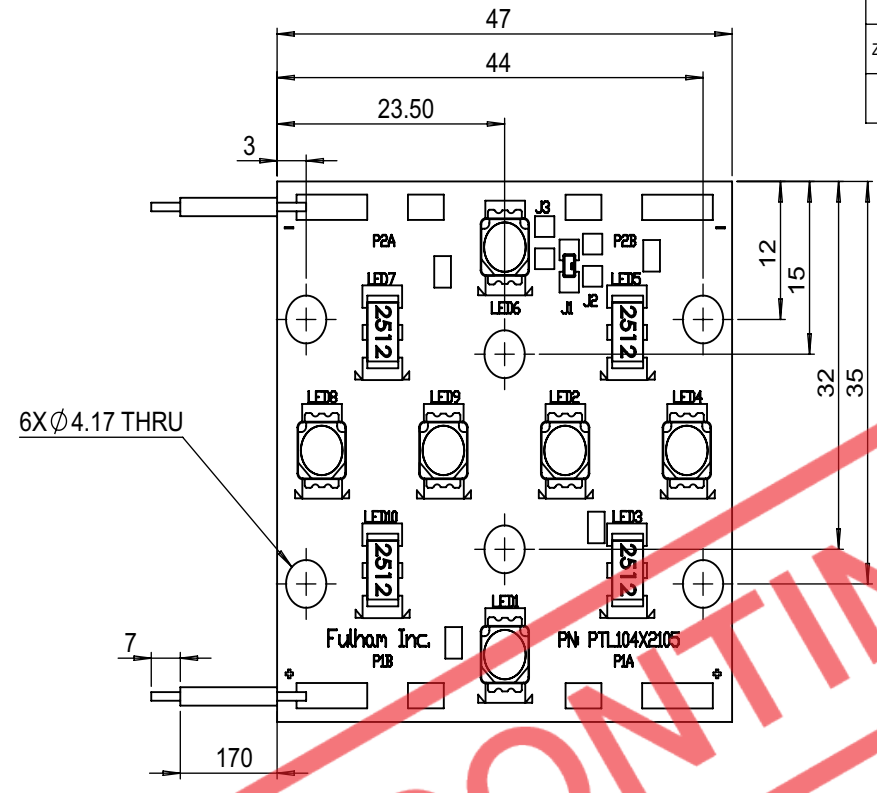
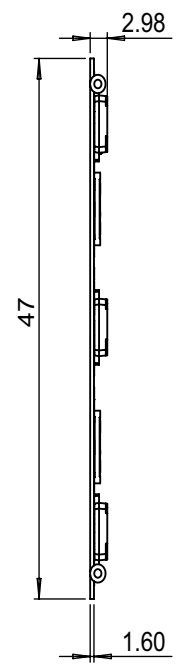
D

C

B

A

REVISIONS				
ZONE	REV.	DESCRIPTION	DATE	APPROVED
	1.0	INITIAL RELEASE		



ISOMETRIC VIEW  
SCALE 2:1


SIDE VIEW

TOP VIEW

General Table

ITEM	DESIGNATION	DESCRIPTION	QTY
1	-	PCB BOARD	1
2	P1B (+)	Red Stranded Hook-Up Wire, 22 AWG, 170 mm (including 7mm on Left end for wire stripping)	1
3	P2A (-)	Blue Stranded Hook-Up Wire, 22 AWG, 170 mm (including 7mm on Left end for wire stripping)	1
4	LED1, LED2, LED4, LED6, LED8, LED9	LED	6
5	J1	JUMPER	1
6	LED3, LED5, LED7, LED10	RESISTOR	4

CCT Matrix:	
xx	CCT
65	6020 - 7040K
57	5310 - 6020K
50	4745 - 5310K
45	4260 - 4745K
40	3710 - 4260K
35	3200 - 3710k
30	2870 - 3200K
27	2580 - 2870K

APPROVALS		DATE	 <small>12705 S. Van Ness Ave. Hawthorne, CA 90250 tel.: 1-323-779-2980, fax: 1-323-754-9060</small>
DRAWN EDWIN REYES		12/06/2012	
CHKD MONICA ALEMAN		12/06/2012	
ENGR ALVARO GARCIA		12/06/2012	
<b>UNLESS OTHERWISE SPECIFIED DIMENSIONS ARE IN MILLIMETERS</b>			<b>TITLE</b> 6 LED Square Module (47x47 mm, 700 mA CC, 13.7W)
PART NO.		SIZE	DWG NO.
		B	TM06SQ26XX-001
			REV 1.0

THIS DRAWING IS THE PROPERTY OF FULHAM Co., INC AND CONTAINS PRIVILEGED OR CONFIDENTIAL INFORMATION. YOU WILL NOT DISCLOSE, USE, DISSEMINATE, DISTRIBUTE OR COPY THIS DRAWING FOR PURPOSES OTHER THAN WHAT IT IS INTENDED FOR.

DO NOT SCALE PRINT	FROM	SCALE 2:1	SHEET 1 OF 1
--------------------	------	-----------	--------------

4

3

2

1